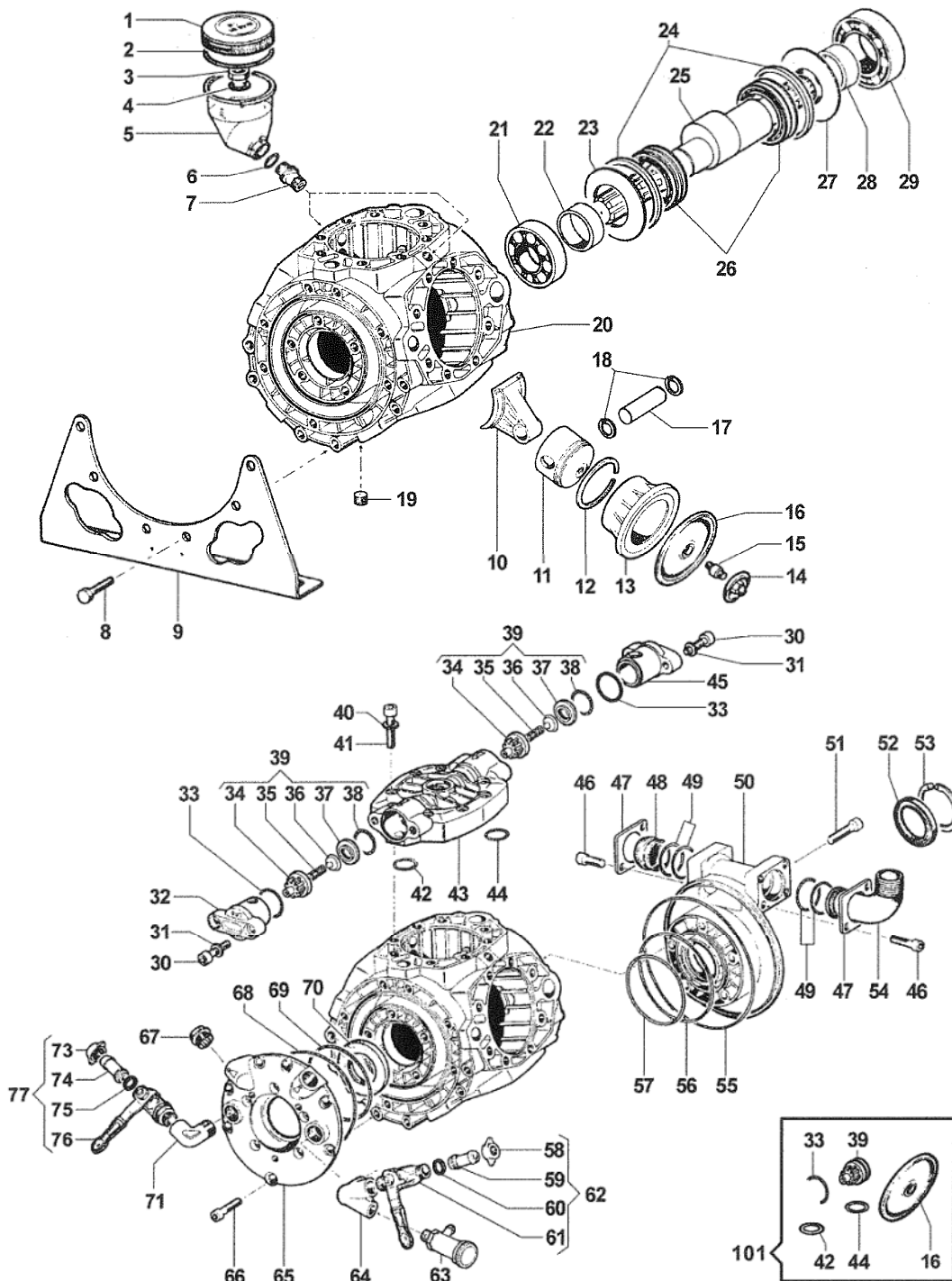




APS141 / APS166

APS141 / APS166



PRICES SUBJECT TO CHANGE WITHOUT NOTICE.

#	PART #	DESCRIPTION	NOTE	QTY
1	0402.0143.00	CAP		2
2	1210.0373.00	O-RING	3,53x73,03	2
3	0600.0051.00	SPECIAL BOLT	G3/8	2
4	1209.0091.00	GASKET	3/8"	2
5	0421.0022.00	VOLUMETRIC COMPENSATOR		2
6	1210.0392.00	O-RING	2,0X16	2
7	2000.0107.00	NIPPLE	G3/8-G3/8	2
8	3607.0220.00	HEXAGONAL SCREW	M10x30	12
9	2400.0063.00	PUMP MOUNTING BRACKET		2
10	0205.0062.00	CONNECTING ROD ASSEMBLY		1
11	2409.0068.00	PISTON	70	5
12	0020.0001.00	COMPRESSION RING	70x3x2,8	5
13	0400.0039.00	APS166 PISTON SLEEVE	70	5
	0400.0070.00	APS141 PISTON SLEEVE	70	5
14	0602.0011.00	DISC		5
15	2419.0042.00	STUD BOLT	12x30/11x11	5
16	1800.0012.00	DIAPHRAGM	BUNA	5
	1800.0058.00	DIAPHRAGM	DESMOPAN	5
	1800.0031.00	DIAPHRAGM	VITON	5
17	3011.0003.00	CONNECTING ROD PIN	18x57	5
18	3020.0006.00	RETAINING CLIP	18	10
19	3200.0019.00	PLUG	GC3/8X10	1
20	0403.0125.00	PUMP CRANKCASE		1
21	0438.0003.00	BALL BEARING	40X110X27	1
22	0601.0226.00	SPACER	40x55x16	1
23	2813.0030.00	CONNECTING ROD WASHER	40x115x3,5	1
24	0010.0025.00	CONNECTING ROD RING	119x108x10	2
25	0001.0318.00	APS166 THROUGHSHAFT	1"3/8 M-M	1
	0001.0313.00	APS141 THROUGHSHAFT	1"3/8 M-M	1
26	0437.0006.00	ROLLER BEARING	65x95X28	2
27	2813.0070.00	CONNECTING ROD WASHER	55x115x3,5	1
28	0601.0224.00	SPACER	55X70X19,5	1
29	0438.0009.00	BALL BEARING	55x120x29	1
30	3609.0009.00	SCREW	M10x35	20
31	2811.0098.00	WASHER	10,5x18x2	20
32	3202.0218.00	PLUG		5
33	1210.0385.00	O-RING	2,62X45,69	10
34	1205.0030.00	SUCT./DELIVERY VALVE CAGE		10
35	1802.0015.00	SPRING (WIRE 0,8)	E11x17	10
36	3604.0009.00	SUCTION/DELIVERY VALVE		10
37	3009.0014.00	SUCT./DELIVERY VALVE SEAT		10
38	1210.0114.00	O-RING	3,53x36,1	10
39	1220.0034.00	SUCT./DELIV. VALVE ASSY KIT		10

#	PART #	DESCRIPTION	NOTE	QTY
40	2811.0025.00	WASHER	13x20x2,5	40
41	3609.0057.00	SCREW	M12X65	40
42	1210.0047.00	O-RING	2,62x22,22	5
43	3218.0099.00	PUMP MANIFOLD		5
44	1210.0145.00	O-RING	2,62X28,25	5
45	3202.0219.00	PLUG		5
46	3609.0164.00	SCREW	M8x16	4
47	2404.0139.00	HOSE TAIL FIXING PLATE		2
48	3202.0203.00	PLUG		1
49	1210.0502.00	O-RING	3,0X40	4
50	1009.0129.00	FLANGE		1
51	3609.0009.00	SCREW	M10x35	5
52	0019.0089.00	OIL SEAL	55x72x8	1
53	3020.0007.00	RETAINING CLIP	72	1
54	2801.0057.00	ELBOW COUPLING	45	1
55	1210.0371.00	O-RING	3,53x215,5	1
56	1210.0365.00	O-RING	2,62x158,42	1
57	1210.0369.00	O-RING	3,53x117,1	1
58	1200.0038.00	WING NUT	1/2" GAS	1
59	2802.0018.00	DELIVERY HOSE TAIL	8x10	1
60	1209.0013.00	GASKET	12x18X2	1
61	2826.0031.00	SX TAP	1/2-1/2 GAS	1
62	1214.0016.00	COMPLETE SX TAP		1
63	1219.0041.00	SAFETY VALVE ASSEMBLY		1
64	2803.0355.00	"Y" COUPLING		1
65	1009.0103.00	FLANGE		1
66	3609.0009.00	SCREW	M10X35	12
67	0432.0031.00	SPECIAL CAP		1
68	1210.0426.00	O-RING	2,5x181	1
69	1210.0353.00	O-RING	2,62x145,72	1
70	0019.0087.00	OIL SEAL	40X80x10	1
71	1211.0012.00	ELBOW		1
73	1200.0038.00	WING NUT	1/2" GAS	1
74	2802.0018.00	DELIVERY HOSE TAIL	8X10	1
75	1209.0013.00	GASKET	12x18X2	1
76	2826.0032.00	DX TAP	1/2-1/2 GAS	1
77	1214.0017.00	COMPLETE DX TAP		1

#	PART #	DESCRIPTION	NOTE	QTY
101	5026.0091.00	COMPLETE REBUILD KIT		1